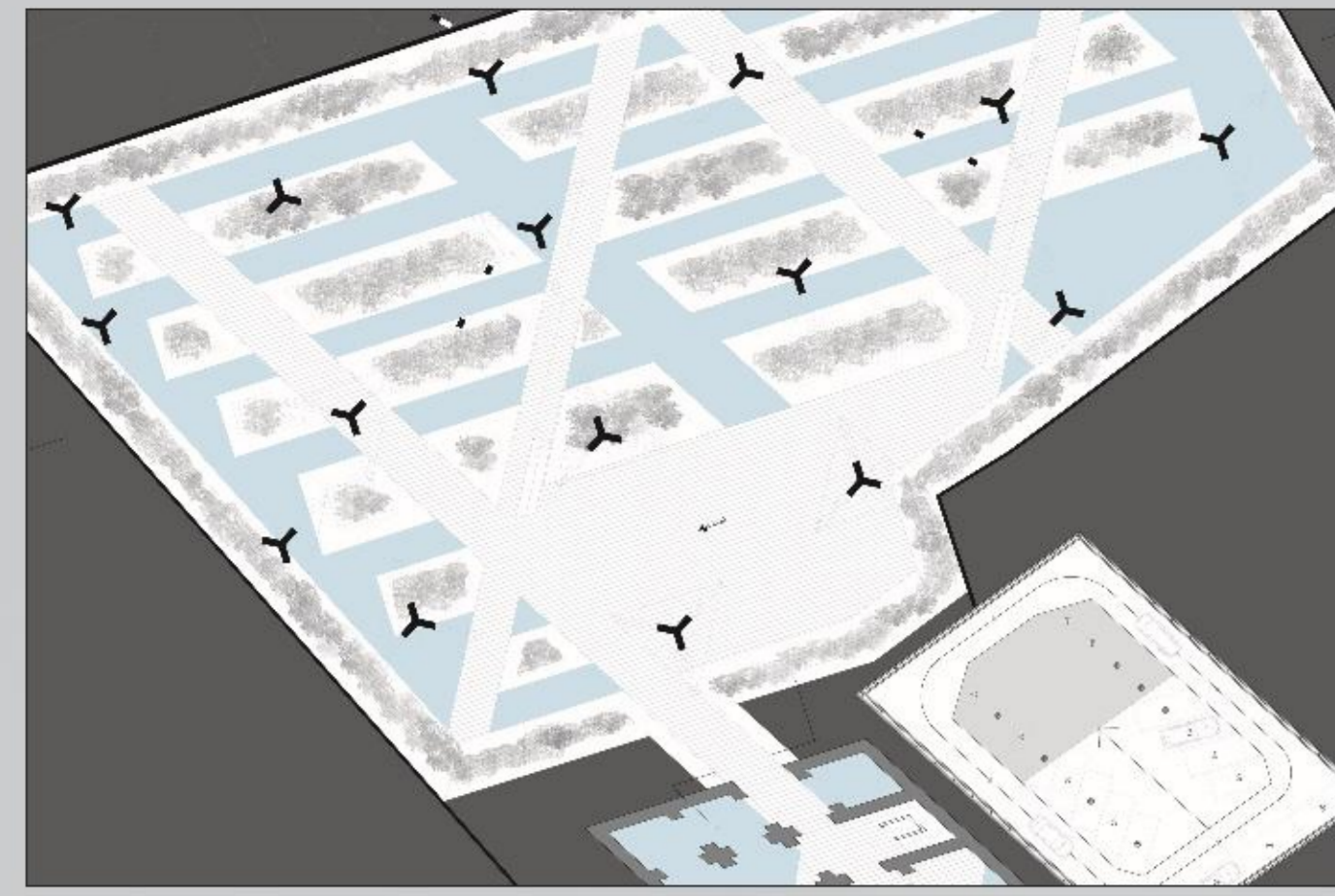
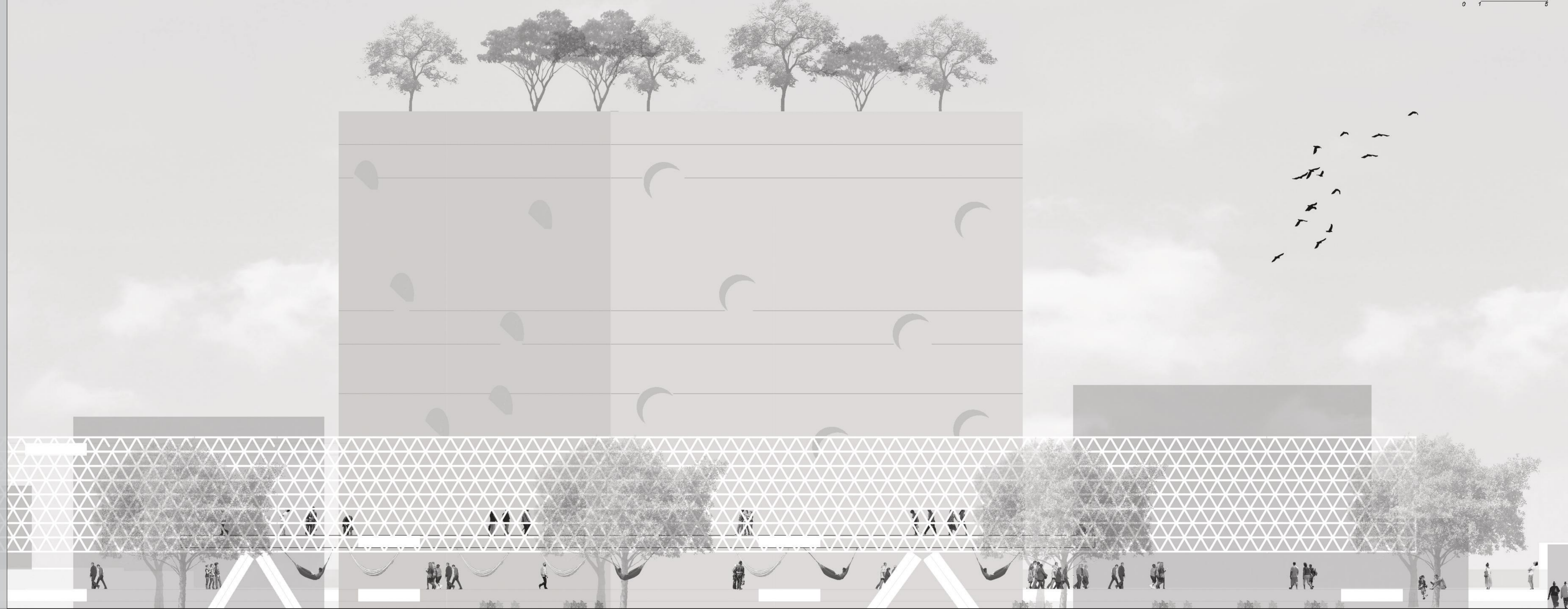
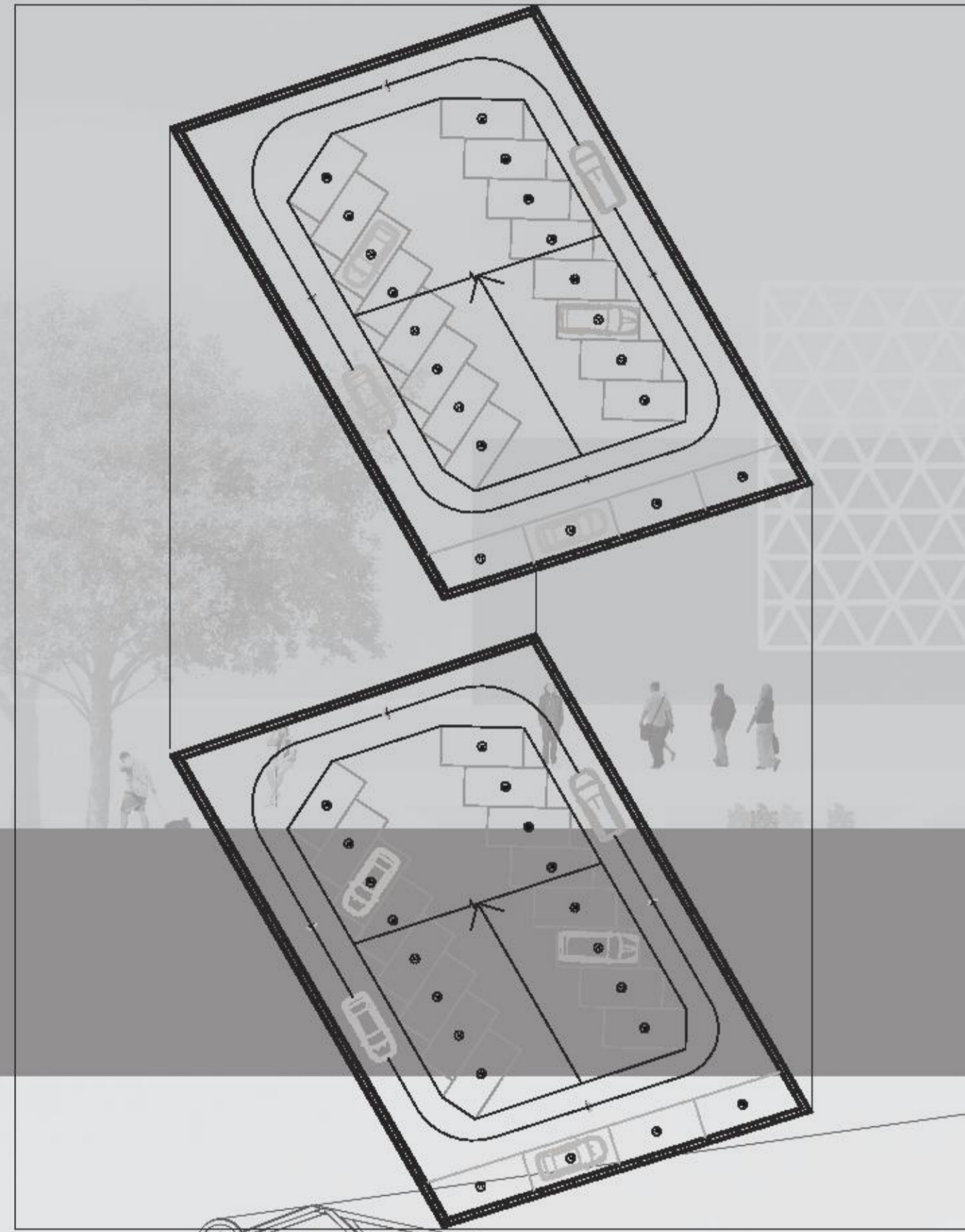


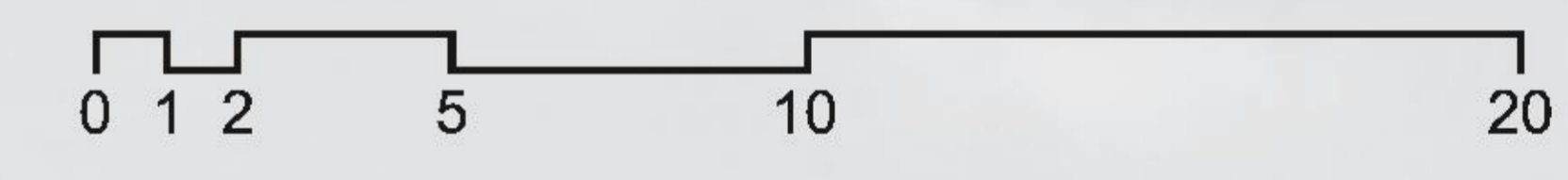
Youa  
plaza de agua  
1050 m<sup>3</sup>



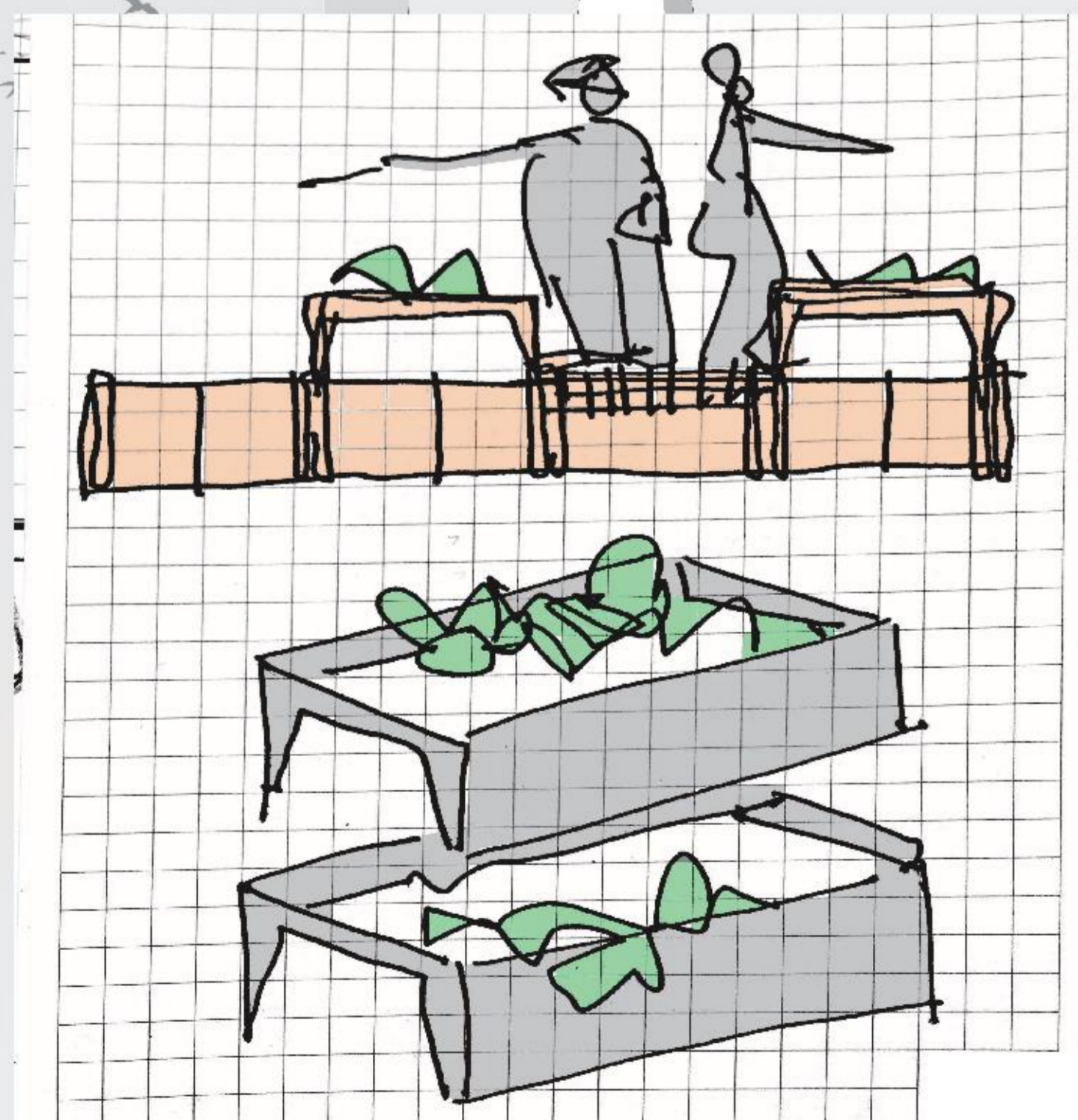
tanque inferior a la torre  
1587m<sup>3</sup>  
total  
2687m<sup>3</sup>  
2637000 litros de agua



Fachada Norte escala 1/100



Estacionamiento en subsuelos  
50 unidades  
Total de m<sup>2</sup> disponibles para programas de amparo en torre  
3680m<sup>2</sup>



Superficie de recorrido en senderos de plaza  
2232m



Fachada Este escala 1/100